

Agriculture

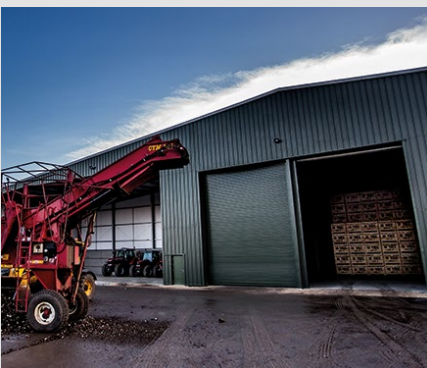
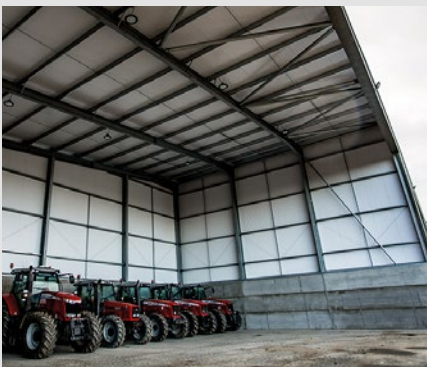
W D Branton Willow Tree Potatoes

Project Type Potato store

Location Lincolnshire

Steel Tonnage 160 tonnes

Works Carried Out Piling, Foundations, Structural Steelwork, Composite Roof and Wall Cladding, Pre-cast concrete walling, Sectional Overhead Doors, Concrete Floor Slab



5400 tonne box potato store with integrated loading and grading areas. Designed to be extended by an additional 2700 tonnes.

Robinson were recommended to Willow Tree Potatoes by Welvent Crop Storage Specialists. The challenge was the construction of a 5400 tonne potato store, ready for harvest, that had not even got planning approval, in only 20 weeks!

Welvent had previously agreed the fundamental building design with the client, detailing box layouts, clear internal sizes required, door locations and ventilation requirements. The steel frame was designed accordingly to the parameters set, and foundations designed to suit the ground conditions based upon previous ground investigation reports. The client commissioned the design and detailing and reservation of material prior to planning approval, as previous Pre-Application advice from the Planning Authority was very supportive. Construction commenced early June, with a great overlap of trades to enable a consolidated construction programme.

The interface of different construction elements ie overlap of trades enabled a consolidated construction programme which made the project feasible for the client. If programme had overrun, the client would have had rent storage to sell the crop or sell early and the building would have been empty until 2018 harvest.

“Robinsons were establishing site and levelling ground within one week of receiving our order. They provided great attention to detail, from design through to completion, whilst delivering to a rigorous programme.”

Andrew Branton